

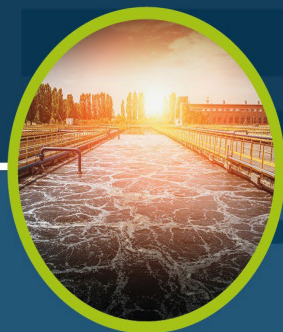


Application Reference : Gaut 002/24-25/E0003

**PROPOSED DEVELOPMENT OF A NEW MALTING
PLANT IN SEDIBENG DISTRICT MUNICIPALITY**

APPENDIX D – ROUTE POSITION INFORMATION

Appendix D1: Coordinates



Component	Latitude	Longitude
Site Boundary		
Corner Point 1	26 25 42.70 S	28 04 08.22 E
Corner Point 2	26 25 45.53 S	28 04 19.57 E
Corner Point 3	26 25 55.33 S	28 04 17.92 E
Corner Point 4	26 25 52.44 S	28 04 06.72 E
Main Access Road		
Start	26 26 03.79S	28 04 17.62E
Middle	26 25 59.47S	28 04 16.92E
End	26 25 55.33S	28 04 17.65E
Length	270m	