

## REPORT

# **Site Sensitivity Verification (SSV) Report - Development of 40MW Photovoltaic (PV) Plant across Sites 2B, 3B, 3C, 4B and 5B associated with the Tubatse Ferrochrome Plant, Steelpoort, Fetakgomo Tubatse Local Municipality**

### SSV Report

Client: TFC Solar (Pty) Ltd

Reference: -RHD-XX-ZZ-RP-Z-0001

Status: Draft/01

Date: 02 October 2023

ROYAL HASKONINGDHV (PTY) LTD

21 Woodlands Drive  
Building 5  
Country Club Estate  
Woodmead  
Johannesburg  
2191  
South Africa  
Southern Africa

+27 87 352 1500 **T**  
+27 11 798 6005 **F**  
royalhaskoningdhv.com **W**

Document title: Site Sensitivity Verification (SSV) Report - Development of 40MW Photovoltaic (PV) Plant across Sites 2B, 3B, 3C, 4B and 5B associated with the Tubatse Ferrochrome Plant, Steelpoort, Fetakgomo Tubatse Local Municipality

Subtitle: SSV Report

Reference: -RHD-XX-ZZ-RP-Z-0001

Your reference

Status: Draft/01

Date: 02 October 2023

Project name: 40MW PV Plant

Project number: MD6154

Classification

Project related

*Unless otherwise agreed with the Client, no part of this document may be reproduced or made public or used for any purpose other than that for which the document was produced. Royal HaskoningDHV (Pty) Ltd accepts no responsibility or liability whatsoever for this document other than towards the Client.*

*Please note: this document contains personal data of employees of Royal HaskoningDHV (Pty) Ltd. Before publication or any other way of disclosing, this report needs to be anonymized, unless anonymisation of this document is prohibited by legislation.*

Revision	Date	Description	Prepared	Checked	Approved
01	02.10.23	Draft SSV Report	Prashika Reddy	Seshni Govender	

## Table of Contents

1	Introduction	1
2	National Web-based Environmental Screening Tool	1
3	Specialist Input into the SSV Exercise	1

## Table of Tables

Table 3-1: Specialist input into the SSV	1
Table 3-2: Current use of the land and the sensitivity in terms of the EST and SSV	3

## Appendices

Appendix A – DFFE EST Report

## 1 Introduction

Government Notice No. 320, dated 20 March 2020, includes the requirement for a Site Sensitivity Verification (SSV) exercise to be undertaken by either an Environmental Assessment Practitioner (EAP) of a specialist to confirm the current use of the land and the environmental sensitivity of the site under consideration identified by the National Web-based Environmental Screening Tool (EST).

The SSV must be undertaken through the use of:

- a) A desktop analysis, using satellite imagery;
- b) A preliminary on-site inspection; and
- c) Any other available and relevant information.

The outcome of the SSV is recorded in the form of this report that-

- a) Confirms or disputes the current use of the land and the environmental sensitivity as identified by the EST, such as new development or infrastructure, the change in vegetation cover or status etc.;
- b) Contains a motivation and evidence of either the verified or different use of the land and environmental sensitivity; and
- c) Is submitted together with the relevant reports prepared in accordance with the requirements of the Environmental Impact Assessment (EIA) Regulations.

## 2 National Web-based Environmental Screening Tool

An EST Report for the proposed project was generated on 21 August 2023 to determine the current use of the land and the environmental sensitivity of the site under consideration. Table 3-2 confirms or disputes the current use of the land and the sensitivity and contains a motivation of either the verified or different use of the land.

## 3 Specialist Input into the SSV Exercise

The specialists included in Table 3-1 provided input into the SSV exercise.

Table 3-1: Specialist input into the SSV

Theme	Assessment	Specialist Details
Agriculture	Agricultural Compliance Statement	Johann Lanz (private)
Animal Species Plant Species Terrestrial Biodiversity	Terrestrial Biodiversity Assessment	Bathusi Environmental Consulting – Riaan Robbeson
Aquatic Biodiversity	Freshwater Assessment	Scientific Aquatic Services – Paul da Cruz
Archaeological and Cultural Heritage	Heritage Impact Assessment	PGS – Wouter Fourie
Palaeontology	Desktop Palaeontological Assessment	Banzai Environmental – Elize Butler
Avian	Avifaunal Assessment	Scientific Aquatic Services – Paul da Cruz

Theme	Assessment	Specialist Details
Landscape (Solar)	Visual Compliance Statement	Scientific Aquatic Services – Paul da Cruz

Table 3-2: Current use of the land and the sensitivity in terms of the EST and SSV

Theme	Assessment Protocol	Sensitivity - EST	Sensitivity – EAP/Specialist	Motivation
Agriculture	Protocol for the Specialist Assessment and Minimum Report Content Requirements of Environmental Impacts on Agricultural Resources by Onshore Wind and/or Solar Photovoltaic Energy Generation Facilities where the Electricity Output is 20 Megawatts or more	Low - High	High – however it not relevant to an assessment of agricultural impact	<p>The screening tool classifies the assessed area as ranging from low to high agricultural sensitivity.</p> <p>None of the land is classified as cropland and the rating of agricultural sensitivity is therefore purely a function of classified land capability.</p> <p>The classified land capability of the site ranges from 4 to 10. This assessment verifies that the site is not within crop boundaries and verifies that the classified land capability is likely to be accurate. This assessment therefore confirms the high sensitivity rating by the EST, based on natural agricultural resources. However, despite the natural agricultural resources, the site’s agricultural potential is limited, and the high sensitivity rating is therefore not relevant to an assessment of the agricultural impact as agriculture is not possible on the sites while Samancor and related industries are operating. The development will not lead to a loss of potential, productive agricultural land and therefore no loss of future agricultural production potential.</p> <p>An <b>Agricultural Compliance Statement</b> will be prepared for the project.</p>
Animal Species	Protocol for the Specialist Assessment and Minimum Report Content Requirements for Environmental Impacts on Terrestrial Animal Species	High	High	<p>Animal taxa of conservation concern have been recorded from nearby localities in similar habitat types. Habitat from, particularly, southern parts of Site 2B is considered suitable (medium-high at least) for Serval, Brown Hyaena, and possibly Lobatse Hinged Tortoise, while Southern Mountain Reedbuck has been confirmed from this site. Several other fauna SCC exhibit high Likelihood of Occurrence, therefore the sensitivity of High is confirmed.</p>

Theme	Assessment Protocol	Sensitivity - EST	Sensitivity – EAP/Specialist	Motivation
				A <b>Terrestrial Biodiversity Assessment</b> is being undertaken for the project.
Aquatic Biodiversity	Protocol for the Specialist Assessment and Minimum Report Content Requirements for Environmental Impacts on Aquatic Biodiversity	Low	Very High	<p>The designation of Very High sensitivity to the Steelpoort River by the EST is supported and not disputed. In reality, two sections of the river's riparian zone as delineated encroach into the investigation area.</p> <p>The designation of Low sensitivity to the remainder the study and investigation area is partly disputed; the Episodic Drainage Lines (EDLs) that form tributaries of the Steelpoort River have been designated as High sensitivity features due to their direct hydrological connectivity to the Steelpoort River. The remainder of Project Areas of Influence (PAOI) is Low.</p> <p>A <b>Freshwater Assessment</b> is being undertaken for the project.</p>
Archaeological and Cultural Heritage	Site Sensitivity Verification Requirements where a Specialist Assessment is required but no Specific Assessment Protocol has been prescribed	Very High	Low (Sites 3B, and 5B)	According to the EST, the project area has a Low Heritage Sensitivity, except for where it intersects with Site 3C. The fieldwork has shown that some archaeological and heritage resources (burial grounds and graves, historical structures and archaeological sites) were present in the area and thus have a higher rating than the original screening rating.
			Very High (2B, 3C, 4B)	A <b>Heritage Impact Assessment</b> is being undertaken for the project.
Avian	Protocol for the Specialist Assessment and Minimum Report Content Requirements for Environmental Impacts on Terrestrial Animal Species	High	High	The PAOI contains confirmed habitat for species of conservation concern (SCC) as indicated in the EST. The occurrence of SCC was confirmed during surveys, with observations of Southern Bald Ibis, Secretary Bird, Lanner Falcon recorded within the PAOI and its immediate surrounds. A Wahlberg Eagles nest was found to the south of Site 4A. The classification of 'High' sensitivity is therefore confirmed.



## Project related

Theme	Assessment Protocol	Sensitivity - EST	Sensitivity – EAP/Specialist	Motivation
				An <b>Avifaunal Assessment</b> is being conducted for the project.
Civil Aviation (Solar) PV Theme	Protocol for the Specialist Assessment and Minimum Report Content Requirements for Environmental Impacts on Civil Aviation Installations	Low	Low	There will be no impact on the communication systems, navigation, or surveillance systems due to the distance and the elevation of the proposed development from any of the ATNS facilities.  Comments will be requested from the CAA and ATNS, however, no assessment will be conducted for the CAA Theme.
Defence	Protocol for the Specialist Assessment and Minimum Report Content Requirements for Environmental Impacts on Defence Installations	Low	Low	There are no defence installations in close proximity to the sites.  Comments will be requested from the Department of Defence, however, no assessment will be conducted for the Defence Theme.
Landscape (Solar) Theme	Site Sensitivity Verification Requirements where a Specialist Assessment is required but no Specific Assessment Protocol has been prescribed	Very High	Low	The landscape based visual sensitivity has been verified to be Low due to the level of anthropogenic alteration of the landscape and the absence of locations/land uses associated with a high degree of visual sensitivity.  A <b>Visual Compliance Statement</b> will be prepared for the project.
Palaeontology	Site Sensitivity Verification Requirements where a Specialist Assessment is required but no Specific Assessment Protocol has been prescribed	High	High (southern portion of Site 2B)	Sites 3B, 3C, 4B and 5B are located in a low paleontological sensitivity area whilst a small southern portion of Site 2B is in a 'High' paleo-sensitivity area.
			Low (Sites 3B, 3C, 4B and 5B)	A <b>Desktop Palaeontological Impact Assessment</b> is being conducted for the project.
Plant Species	Protocol for the Specialist Assessment and Minimum Report content requirements	Medium	High	Plant taxa of conservation concern ( <i>Adenia fruticosa</i> , <i>Aloe burgersfortensis</i> , <i>Aloe wickensii</i> , <i>Balanites maughamii</i> , <i>Boscia albitrunca</i> , <i>Dicliptera fruticosa</i> , <i>Elaeodendron transvaalense</i> , <i>Eulophia petersii</i> ,

## Project related

Theme	Assessment Protocol	Sensitivity - EST	Sensitivity – EAP/Specialist	Motivation
	for Environmental Impacts on Terrestrial Plant Species			<p><i>Sclerocarya birrea</i>, <i>Stapelia cf. gettliffei/ gigantea</i> were recorded on sites. Plant SCC species recorded from all sites, but specific reference to Sites 2B, 3C and 4B, therefore a sensitivity of High is confirmed.</p> <p>A <b>Terrestrial Biodiversity Assessment</b> is being undertaken for the project.</p>
Terrestrial Biodiversity	Protocol for the Specialist Assessment and Minimum Report Content Requirements for Environmental Impacts on Terrestrial Biodiversity	Very High	High	<p>The project is located with the Sekhukhune Plains Bushveld Threatened Ecosystem. Sites 3C and 4B are likely to be exhibit High Sensitivity, while southern parts of Site 2B are likely to exhibit Very High Sensitivity. A sensitivity of High is therefore confirmed.</p> <p>A <b>Terrestrial Biodiversity Assessment</b> is being undertaken for the project.</p>
RFI	Site Sensitivity Verification Requirements where a Specialist Assessment is required but no Specific Assessment Protocol has been prescribed	Medium	Low	<p>Various service providers (Sentech, Vodacom, Openserve, SAWS, Cell C and SARAQ) have provided letters of no objection for Sites 2 – 5 and that no interference, operational risks, or direct impacts will be experienced at any of their infrastructure.</p> <p>No further assessment is required.</p>

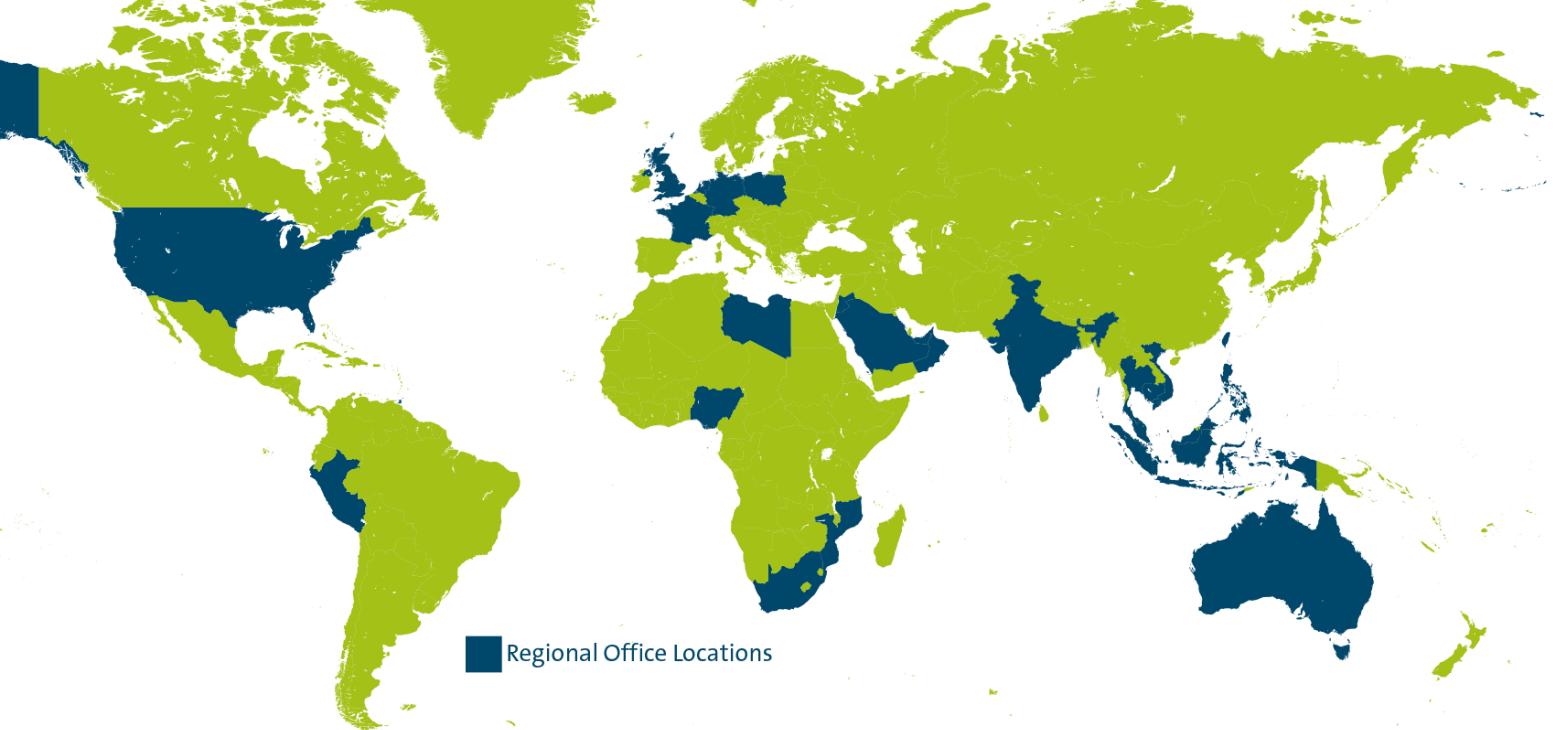
In summary the following specialist assessments will be undertaken for the project:

- Agricultural Compliance Statement;
- Terrestrial Biodiversity Assessment;
- Freshwater Assessment;
- Heritage Impact Assessment;
- Desktop Palaeontological Impact Assessment;
- Avifaunal Assessment;
- Visual Compliance Statement; and
- Hydrology Assessment (in support of the Water Use Licence application).

Report compiled by Prashika Reddy (Registered EAP) and the various specialist team members.

P.R.

Prashika Reddy  
Registered EAP



■ Regional Office Locations

Royal HaskoningDHV is an independent consultancy which integrates 140 years of engineering expertise with digital technologies and software solutions. As consulting engineers, we care deeply about our people, our clients and society at large. Through our mission Enhancing Society Together, we take responsibility for having a positive impact on the world. We constantly challenge ourselves and others to develop sustainable solutions to local and global issues related to the built environment and the industry.

Change is happening. And it's happening fast – from climate and digital transformation to customer demands and hybrid working. The speed and extent of these changes create complex challenges which cannot be addressed in isolation. New perspectives are needed to accommodate the broader societal and technological picture and meet the needs of our ever-changing world.

Backed by the expertise of over 6,000 colleagues working from offices in more than 20 countries across the world, we are helping organisations to turn these challenges into opportunities and make the transition to smart and sustainable operations. We do this by seamlessly integrating engineering and design knowledge, consulting skills, software and technology to deliver more added value for our clients and their asset lifecycle.

We act with integrity and transparency, holding ourselves to the highest standards of environmental and social governance. We are diverse and inclusive. We will not compromise the safety or well-being of our team or communities – no matter the circumstances.

We actively collaborate with clients from public and private sectors, partners and stakeholders in projects and initiatives. Our actions, big and small, are driving the positive change the world needs, and are enhancing society now and for the future.

Our head office is in the Netherlands, and we have offices across Europe, Asia, Africa, Australia and the Americas.



[royalhaskoningdhv.com](http://royalhaskoningdhv.com)



## APPENDIX A DFFE EST REPORT

**SCREENING REPORT FOR AN ENVIRONMENTAL AUTHORIZATION AS  
REQUIRED BY THE 2014 EIA REGULATIONS – PROPOSED SITE  
ENVIRONMENTAL SENSITIVITY**

**EIA Reference number:** TBD

**Project name:** Tubatse PV Plant

**Project title:** Tubatse PV Plant

**Date screening report generated:** 21/08/2023 12:49:41

**Applicant:** Samancor Chrome

**Compiler:** RHDHV

**Compiler signature:** S.G.  
.....

**Application Category:** Utilities Infrastructure|Electricity|Generation|Renewable|Solar|PV

# Table of Contents

- Proposed Project Location ..... 3
  - Orientation map 1: General location ..... 3
- Map of proposed site and relevant area(s) ..... 4
  - Cadastral details of the proposed site ..... 4
  - Wind and Solar developments with an approved Environmental Authorisation or applications under consideration within 30 km of the proposed area ..... 5
  - Environmental Management Frameworks relevant to the application ..... 6
- Environmental screening results and assessment outcomes ..... 6
  - Relevant development incentives, restrictions, exclusions or prohibitions ..... 6
  - Proposed Development Area Environmental Sensitivity ..... 7
  - Specialist assessments identified ..... 7
- Results of the environmental sensitivity of the proposed area ..... 9
  - MAP OF RELATIVE AGRICULTURE THEME SENSITIVITY ..... 9
  - MAP OF RELATIVE ANIMAL SPECIES THEME SENSITIVITY ..... 10
  - MAP OF RELATIVE AQUATIC BIODIVERSITY THEME SENSITIVITY ..... 11
  - MAP OF RELATIVE ARCHAEOLOGICAL AND CULTURAL HERITAGE THEME SENSITIVITY ..... 12
  - MAP OF RELATIVE AVIAN THEME SENSITIVITY ..... 13
  - MAP OF RELATIVE CIVIL AVIATION (SOLAR PV) THEME SENSITIVITY ..... 14
  - MAP OF RELATIVE DEFENCE THEME SENSITIVITY ..... 15
  - MAP OF RELATIVE LANDSCAPE (SOLAR) THEME SENSITIVITY ..... 16
  - MAP OF RELATIVE PALEONTOLOGY THEME SENSITIVITY ..... 17
  - MAP OF RELATIVE PLANT SPECIES THEME SENSITIVITY ..... 18
  - MAP OF RELATIVE RFI THEME SENSITIVITY ..... 19
  - MAP OF RELATIVE TERRESTRIAL BIODIVERSITY THEME SENSITIVITY ..... 20

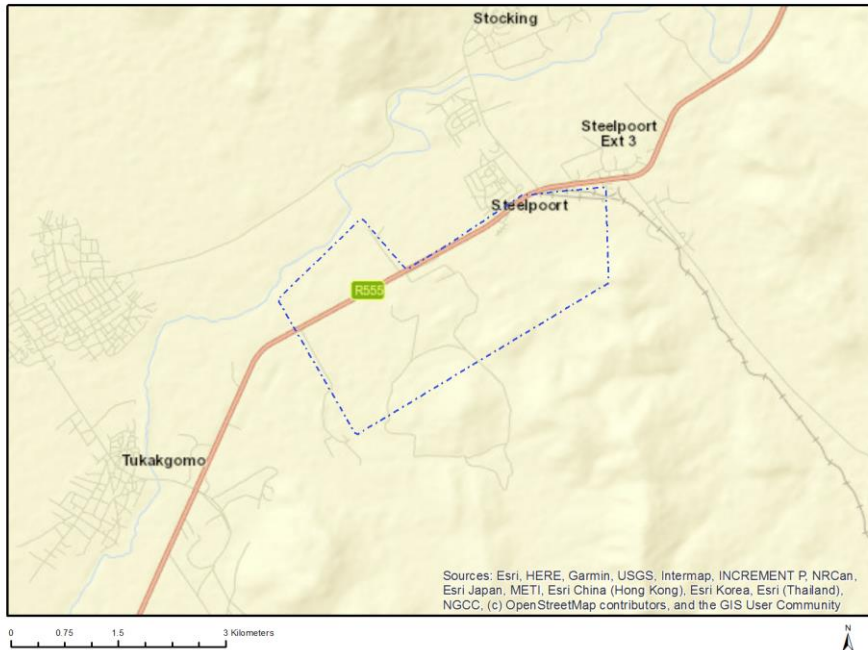
# Proposed Project Location

Orientation map 1: General location





## Map of proposed site and relevant area(s)



## Cadastral details of the proposed site

Property details:

No	Farm Name	Farm/ Erf No	Portion	Latitude	Longitude	Property Type
1	STEELPOORT	366	10	24°44'8.8S	30°12'14.54E	Erven
2	STEELPOORT	366	11	24°44'8.54S	30°12'13.51E	Erven
3	STEELPOORT	373	0	24°43'47.33S	30°12'25.19E	Erven
4	STEELPOORT	366	12	24°44'9.28S	30°12'14.07E	Erven
5	STEELPOORT	366	13	24°44'10.36S	30°12'15.42E	Erven
6	STEELPOORT	366	27	24°44'8.26S	30°12'16.46E	Erven
7	STEELPOORT	367	15	24°44'3.17S	30°12'11.75E	Erven
8	STEELPOORT	374	0	24°43'56.43S	30°12'21.4E	Erven
9	STEELPOORT	366	6	24°44'7.85S	30°12'15.91E	Erven
10	STEELPOORT	366	8	24°44'7.87S	30°12'14.46E	Erven
11	STEELPOORT	366	15	24°44'10.88S	30°12'16.47E	Erven
12	STEELPOORT	366	17	24°44'9.41S	30°12'16.37E	Erven
13	STEELPOORT	1018	0	24°44'1.5S	30°12'19.24E	Erven
14	STEELPOORT	366	7	24°44'7.35S	30°12'15.23E	Erven
15	STEELPOORT	366	14	24°44'10.7S	30°12'15.94E	Erven
16	STEELPOORT	366	25	24°44'6.68S	30°12'19.04E	Erven
17	STEELPOORT	383	0	24°43'49.9S	30°13'0.87E	Erven
18	STEELPOORT	366	2	24°44'6.68S	30°12'17.35E	Erven
19	STEELPOORT	366	4	24°44'6.79S	30°12'15.86E	Erven
20	STEELPOORT	366	19	24°44'9.45S	30°12'17.5E	Erven
21	STEELPOORT	366	21	24°44'8.19S	30°12'17.57E	Erven
22	STEELPOORT	367	8	24°44'3.13S	30°12'9.42E	Erven
23	STEELPOORT	365	0	24°44'2.26S	30°12'23.27E	Erven
24	STEELPOORT	366	1	24°44'6S	30°12'18E	Erven
25	STEELPOORT	366	3	24°44'6.17S	30°12'16.61E	Erven
26	STEELPOORT	366	5	24°44'7.34S	30°12'16.49E	Erven
27	STEELPOORT	366	18	24°44'8.89S	30°12'16.85E	Erven

28	STEELPOORT	366	20	24°44'8.75S	30°12'18.18E	Erven
29	STEELPOORT	376	0	24°43'56.79S	30°12'17.27E	Erven
30	STEELPOORT	364	0	24°44'0.21S	30°12'29.1E	Erven
31	STEELPOORT	366	22	24°44'7.52S	30°12'18.18E	Erven
32	STEELPOORT	366	24	24°44'7.26S	30°12'19.51E	Erven
33	STEELPOORT	366	26	24°44'7.12S	30°12'13.11E	Erven
34	STEELPOORT	367	7	24°44'3.5S	30°12'8.87E	Erven
35	STEELPOORT	382	0	24°43'49.77S	30°13'6.03E	Erven
36	STEELPOORT	366	9	24°44'8.54S	30°12'15.16E	Erven
37	STEELPOORT	366	16	24°44'10.11S	30°12'17.07E	Erven
38	STEELPOORT	366	23	24°44'7.99S	30°12'18.78E	Erven
39	GOUDMYN	337	0	24°46'4.55S	30°13'3.19E	Farm
40	OLIFANTSPOORTJE	319	0	24°45'5.73S	30°14'53.52E	Farm
41	GOUDMYN	337	12	24°43'56.28S	30°12'29.57E	Farm Portion
42	GOUDMYN	337	10	24°45'40.86S	30°13'43.54E	Farm Portion
43	GOUDMYN	337	46	24°44'37.72S	30°11'42.99E	Farm Portion
44	OLIFANTSPOORTJE	319	26	24°43'50.02S	30°12'57.43E	Farm Portion
45	OLIFANTSPOORTJE	319	18	24°43'49.99S	30°13'2.44E	Farm Portion
46	OLIFANTSPOORTJE	319	0	24°44'35.72S	30°14'6.48E	Farm Portion
47	GOUDMYN	337	25	24°44'36.44S	30°11'26.08E	Farm Portion
48	GOUDMYN	337	0	24°47'1.64S	30°13'19.15E	Farm Portion
49	OLIFANTSPOORTJE	319	36	24°43'50.07S	30°12'54.86E	Farm Portion
50	GOUDMYN	337	6	24°45'29.66S	30°12'37.33E	Farm Portion
51	OLIFANTSPOORTJE	319	6	24°42'52.45S	30°13'19.61E	Farm Portion
52	GOUDMYN	337	22	24°43'56.11S	30°12'21.8E	Farm Portion
53	OLIFANTSPOORTJE	319	3	24°43'57.18S	30°13'4.26E	Farm Portion
54	OLIFANTSPOORTJE	319	8	24°43'50.2S	30°12'51.47E	Farm Portion
55	GOUDMYN	337	3	24°43'56.73S	30°12'47.02E	Farm Portion

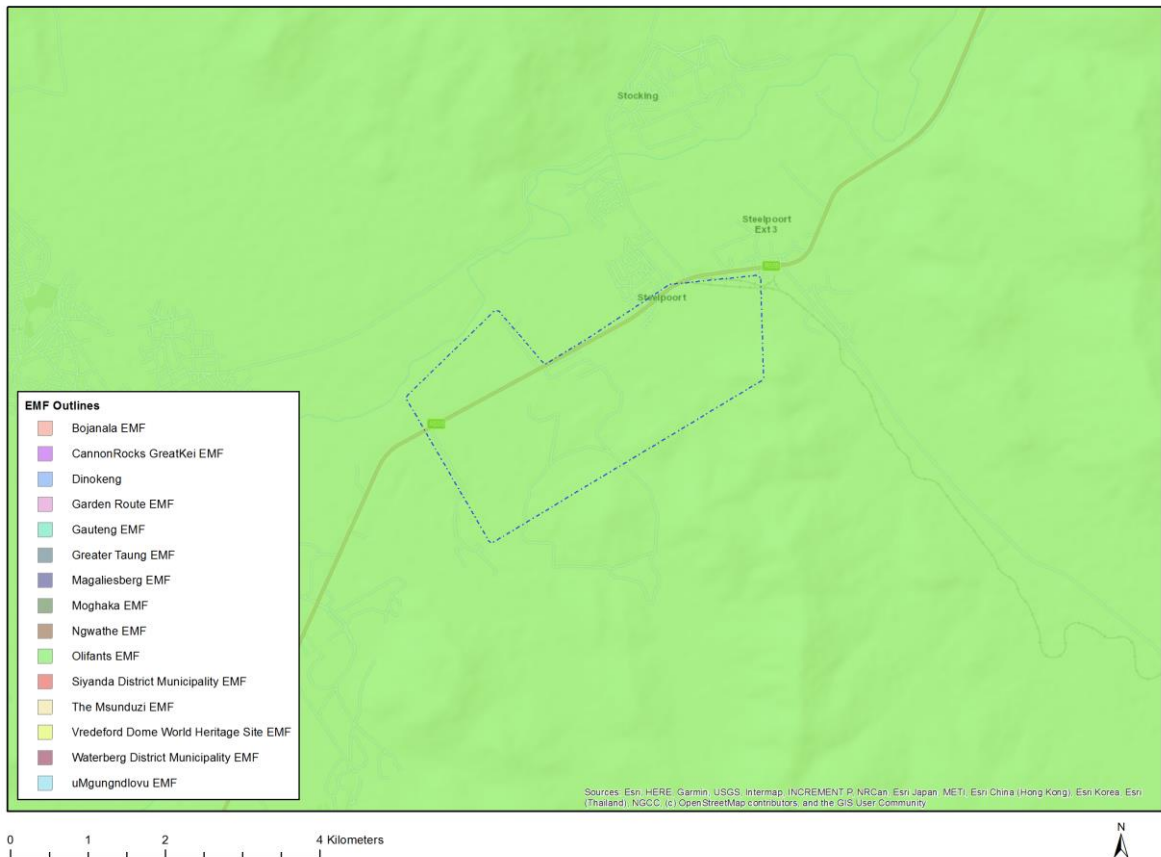
Development footprint<sup>1</sup> vertices:  
No development footprint(s) specified.

### Wind and Solar developments with an approved Environmental Authorisation or applications under consideration within 30 km of the proposed area

No nearby wind or solar developments found.

<sup>1</sup> “development footprint”, means the area within the site on which the development will take place and includes all ancillary developments for example roads, power lines, boundary walls, paving etc. which require vegetation clearance or which will be disturbed and for which the application has been submitted.

## Environmental Management Frameworks relevant to the application



Environmental Management Framework	LINK
Olifants EMF	<a href="https://screening.environment.gov.za/ScreeningDownloads/EMF/Zone_4_6,_67,_78,_80,_92,_103,_122,_129.pdf">https://screening.environment.gov.za/ScreeningDownloads/EMF/Zone_4_6, 67, 78, 80, 92, 103, 122, 129.pdf</a>

## Environmental screening results and assessment outcomes

The following sections contain a summary of any development incentives, restrictions, exclusions or prohibitions that apply to the proposed development site as well as the most environmental sensitive features on the site based on the site sensitivity screening results for the application classification that was selected. The application classification selected for this report is:

**Utilities Infrastructure | Electricity | Generation | Renewable | Solar | PV.**

### Relevant development incentives, restrictions, exclusions or prohibitions

The following development incentives, restrictions, exclusions or prohibitions and their implications that apply to this site are indicated below.

No intersection with any development zones found.

## Proposed Development Area Environmental Sensitivity

The following summary of the development site environmental sensitivities is identified. Only the highest environmental sensitivity is indicated. The footprint environmental sensitivities for the proposed development footprint as identified, are indicative only and must be verified on site by a suitably qualified person before the specialist assessments identified below can be confirmed.

Theme	Very High sensitivity	High sensitivity	Medium sensitivity	Low sensitivity
Agriculture Theme		X		
Animal Species Theme		X		
Aquatic Biodiversity Theme				X
Archaeological and Cultural Heritage Theme	X			
Avian Theme				X
Civil Aviation (Solar PV) Theme				X
Defence Theme				X
Landscape (Solar) Theme	X			
Paleontology Theme		X		
Plant Species Theme			X	
RFI Theme			X	
Terrestrial Biodiversity Theme	X			

## Specialist assessments identified

Based on the selected classification, and the known impacts associated with the proposed development, the following list of specialist assessments have been identified for inclusion in the assessment report. It is the responsibility of the EAP to confirm this list and to motivate in the assessment report, the reason for not including any of the identified specialist study including the provision of photographic evidence of the site situation.

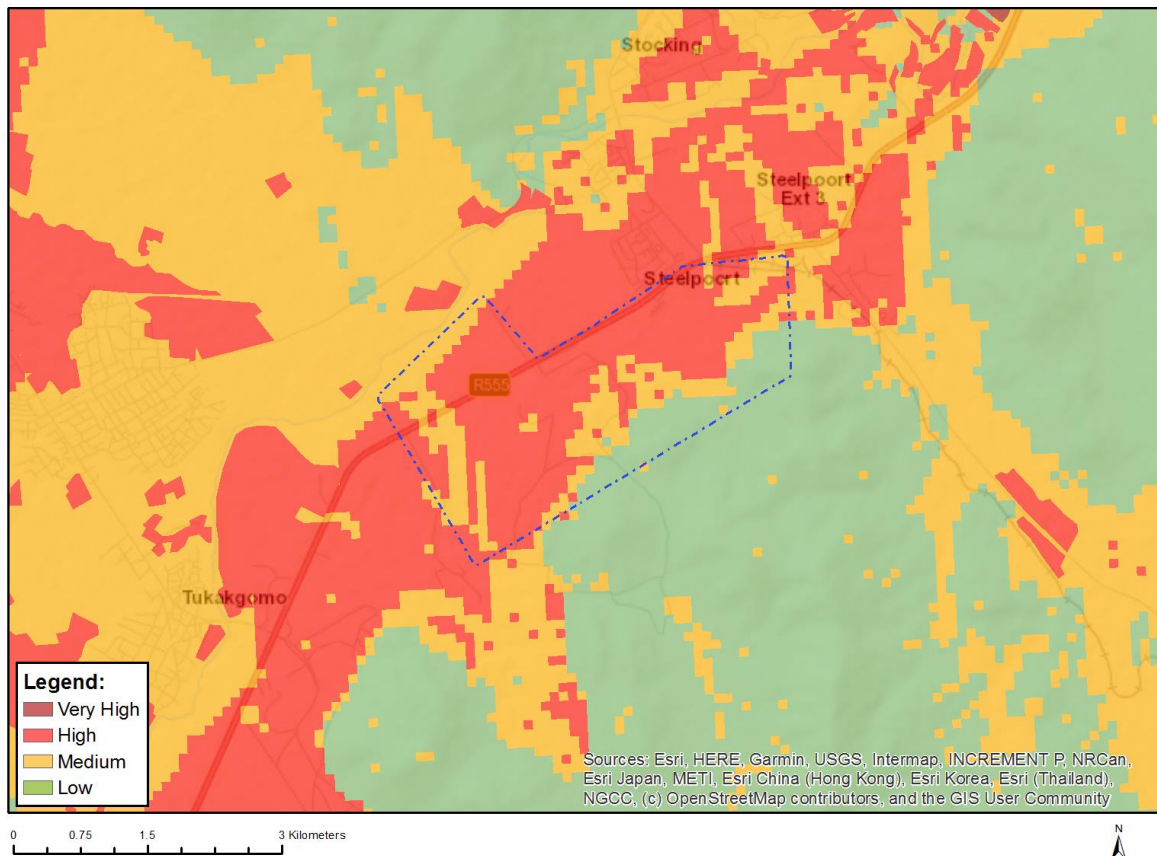
No	Specialist assessment	Assessment Protocol
1	Agricultural Impact Assessment	<a href="https://screening.environment.gov.za/ScreeningDownloads/AssessmentProtocols/Gazetted_WindAndSolar_Agriculture_Assessment_Protocols.pdf">https://screening.environment.gov.za/ScreeningDownloads/AssessmentProtocols/Gazetted_WindAndSolar_Agriculture_Assessment_Protocols.pdf</a>
2	Landscape/Visual Impact Assessment	<a href="https://screening.environment.gov.za/ScreeningDownloads/AssessmentProtocols/Gazetted_General_Requirement_Assessment_Protocols.pdf">https://screening.environment.gov.za/ScreeningDownloads/AssessmentProtocols/Gazetted_General_Requirement_Assessment_Protocols.pdf</a>
3	Archaeological and Cultural Heritage Impact Assessment	<a href="https://screening.environment.gov.za/ScreeningDownloads/AssessmentProtocols/Gazetted_General_Requirement_Assessment_Protocols.pdf">https://screening.environment.gov.za/ScreeningDownloads/AssessmentProtocols/Gazetted_General_Requirement_Assessment_Protocols.pdf</a>
4	Palaeontology Impact Assessment	<a href="https://screening.environment.gov.za/ScreeningDownloads/AssessmentProtocols/Gazetted_General_Requirement_Assessment_Protocols.pdf">https://screening.environment.gov.za/ScreeningDownloads/AssessmentProtocols/Gazetted_General_Requirement_Assessment_Protocols.pdf</a>
5	Terrestrial Biodiversity Impact Assessment	<a href="https://screening.environment.gov.za/ScreeningDownloads/AssessmentProtocols/Gazetted_Terrestrial_Biodiversity_Assessment_Protocols.pdf">https://screening.environment.gov.za/ScreeningDownloads/AssessmentProtocols/Gazetted_Terrestrial_Biodiversity_Assessment_Protocols.pdf</a>
6	Aquatic Biodiversity Impact Assessment	<a href="https://screening.environment.gov.za/ScreeningDownloads/AssessmentProtocols/Gazetted_Aquatic_Biodiversity_Assessment_Protocols.pdf">https://screening.environment.gov.za/ScreeningDownloads/AssessmentProtocols/Gazetted_Aquatic_Biodiversity_Assessment_Protocols.pdf</a>

7	Civil Aviation Assessment	<a href="https://screening.environment.gov.za/ScreeningDownloads/AssessmentProtocols/Gazetted_Civil_Aviation_Installations_Assessment_Protocols.pdf">https://screening.environment.gov.za/ScreeningDownloads/AssessmentProtocols/Gazetted_Civil_Aviation_Installations_Assessment_Protocols.pdf</a>
8	Defense Assessment	<a href="https://screening.environment.gov.za/ScreeningDownloads/AssessmentProtocols/Gazetted_Defence_Installations_Assessment_Protocols.pdf">https://screening.environment.gov.za/ScreeningDownloads/AssessmentProtocols/Gazetted_Defence_Installations_Assessment_Protocols.pdf</a>
9	RFI Assessment	<a href="https://screening.environment.gov.za/ScreeningDownloads/AssessmentProtocols/Gazetted_General_Requirement_Assessment_Protocols.pdf">https://screening.environment.gov.za/ScreeningDownloads/AssessmentProtocols/Gazetted_General_Requirement_Assessment_Protocols.pdf</a>
10	Geotechnical Assessment	<a href="https://screening.environment.gov.za/ScreeningDownloads/AssessmentProtocols/Gazetted_General_Requirement_Assessment_Protocols.pdf">https://screening.environment.gov.za/ScreeningDownloads/AssessmentProtocols/Gazetted_General_Requirement_Assessment_Protocols.pdf</a>
11	Socio-Economic Assessment	<a href="https://screening.environment.gov.za/ScreeningDownloads/AssessmentProtocols/Gazetted_General_Requirement_Assessment_Protocols.pdf">https://screening.environment.gov.za/ScreeningDownloads/AssessmentProtocols/Gazetted_General_Requirement_Assessment_Protocols.pdf</a>
12	Plant Species Assessment	<a href="https://screening.environment.gov.za/ScreeningDownloads/AssessmentProtocols/Gazetted_Plant_Species_Assessment_Protocols.pdf">https://screening.environment.gov.za/ScreeningDownloads/AssessmentProtocols/Gazetted_Plant_Species_Assessment_Protocols.pdf</a>
13	Animal Species Assessment	<a href="https://screening.environment.gov.za/ScreeningDownloads/AssessmentProtocols/Gazetted_Animal_Species_Assessment_Protocols.pdf">https://screening.environment.gov.za/ScreeningDownloads/AssessmentProtocols/Gazetted_Animal_Species_Assessment_Protocols.pdf</a>

## Results of the environmental sensitivity of the proposed area.

The following section represents the results of the screening for environmental sensitivity of the proposed site for relevant environmental themes associated with the project classification. It is the duty of the EAP to ensure that the environmental themes provided by the screening tool are comprehensive and complete for the project. Refer to the disclaimer.

### MAP OF RELATIVE AGRICULTURE THEME SENSITIVITY



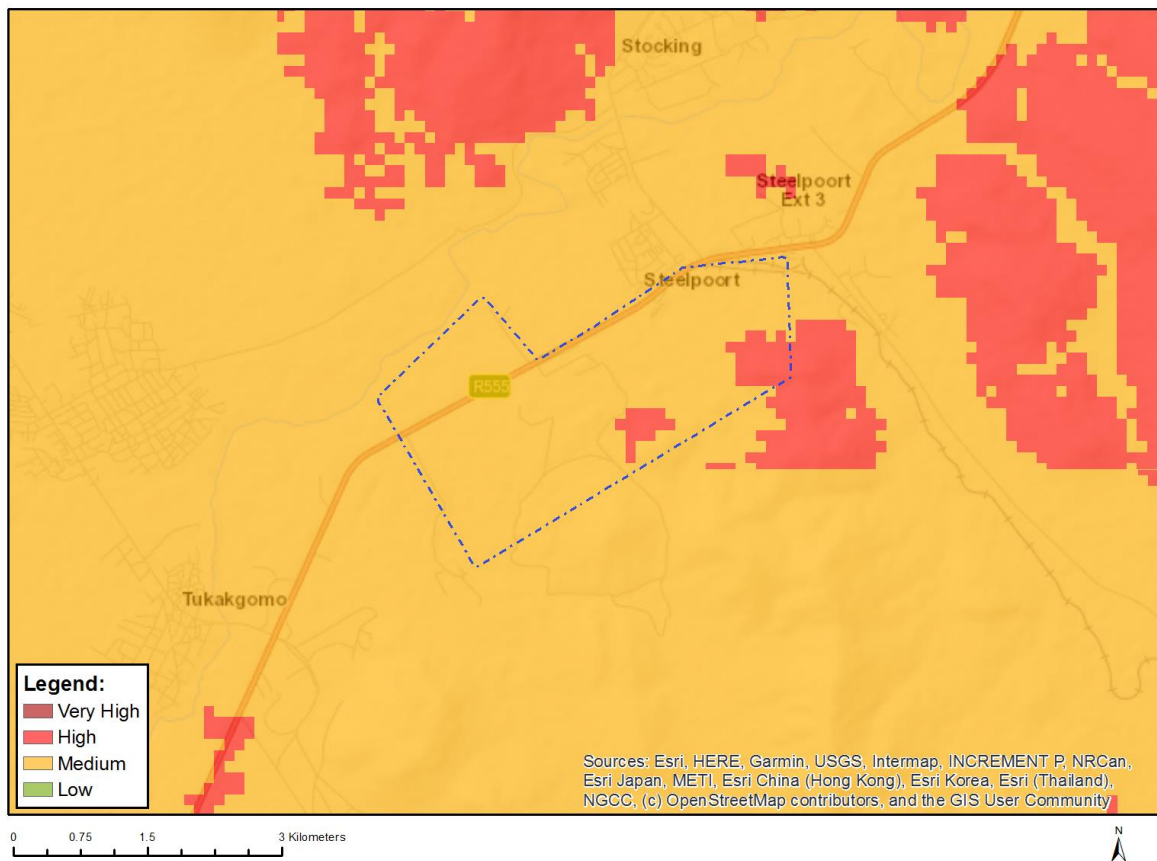
Very High sensitivity	High sensitivity	Medium sensitivity	Low sensitivity
	X		

#### Sensitivity Features:

Sensitivity	Feature(s)
High	Land capability;09. Moderate-High/10. Moderate-High
Low	Land capability;01. Very low/02. Very low/03. Low-Very low/04. Low-Very low/05. Low
Medium	Land capability;06. Low-Moderate/07. Low-Moderate/08. Moderate



## MAP OF RELATIVE ANIMAL SPECIES THEME SENSITIVITY



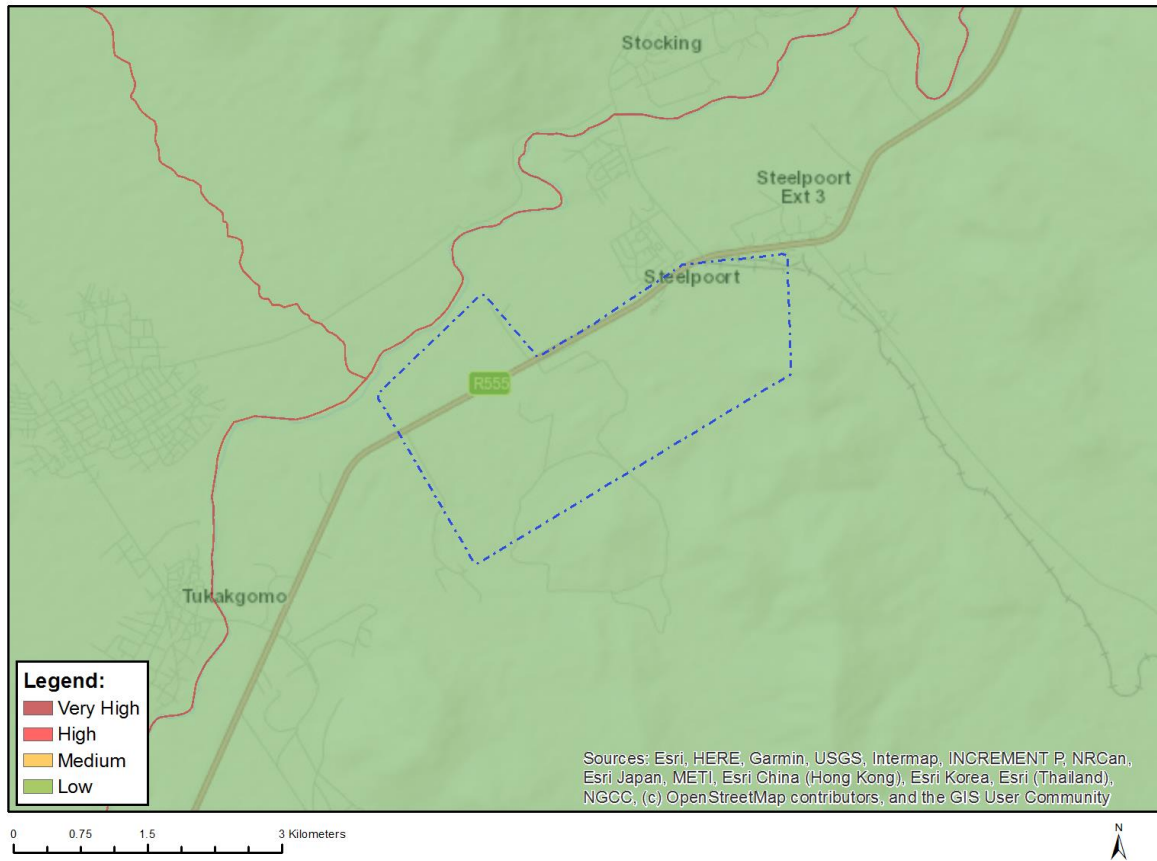
Where only a sensitive plant unique number or sensitive animal unique number is provided in the screening report and an assessment is required, the environmental assessment practitioner (EAP) or specialist is required to email SANBI at [eiadatarequests@sanbi.org.za](mailto:eiadatarequests@sanbi.org.za) listing all sensitive species with their unique identifiers for which information is required. The name has been withheld as the species may be prone to illegal harvesting and must be protected. SANBI will release the actual species name after the details of the EAP or specialist have been documented.

Very High sensitivity	High sensitivity	Medium sensitivity	Low sensitivity
	X		

### Sensitivity Features:

Sensitivity	Feature(s)
High	Aves-Falco biarmicus
Medium	Aves-Podica senegalensis
Medium	Aves-Sagittarius serpentarius
Medium	Aves-Geronticus calvus
Medium	Aves-Aquila rapax
Medium	Mammalia-Crociodura maquassiensis
Medium	Mammalia-Dasymys robertsii
Medium	Mammalia-Lycaon pictus
Medium	Reptilia-Crocodylus niloticus
Medium	Reptilia-Kinixys lobatsiana
Medium	Invertebrate-Aroegas fuscus

## MAP OF RELATIVE AQUATIC BIODIVERSITY THEME SENSITIVITY



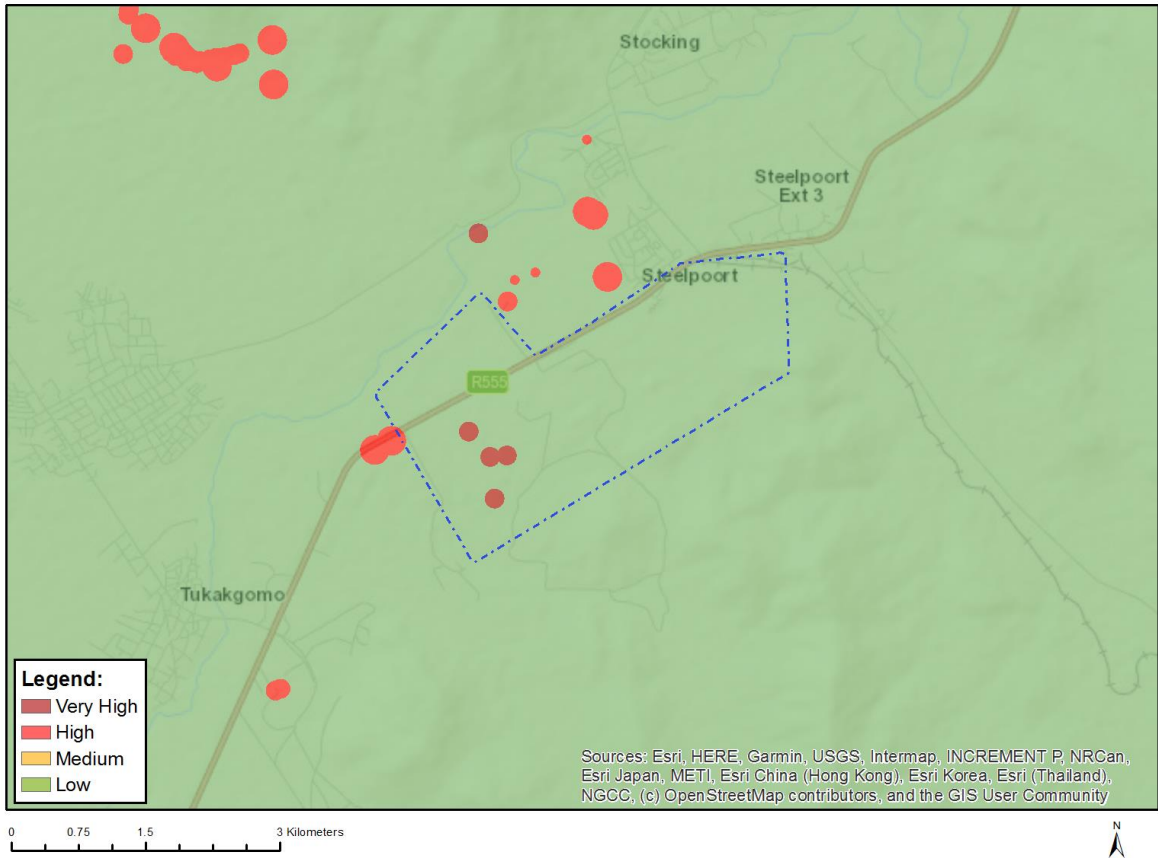
Very High sensitivity	High sensitivity	Medium sensitivity	Low sensitivity
			X

### Sensitivity Features:

Sensitivity	Feature(s)
Low	Low sensitivity



# MAP OF RELATIVE ARCHAEOLOGICAL AND CULTURAL HERITAGE THEME SENSITIVITY

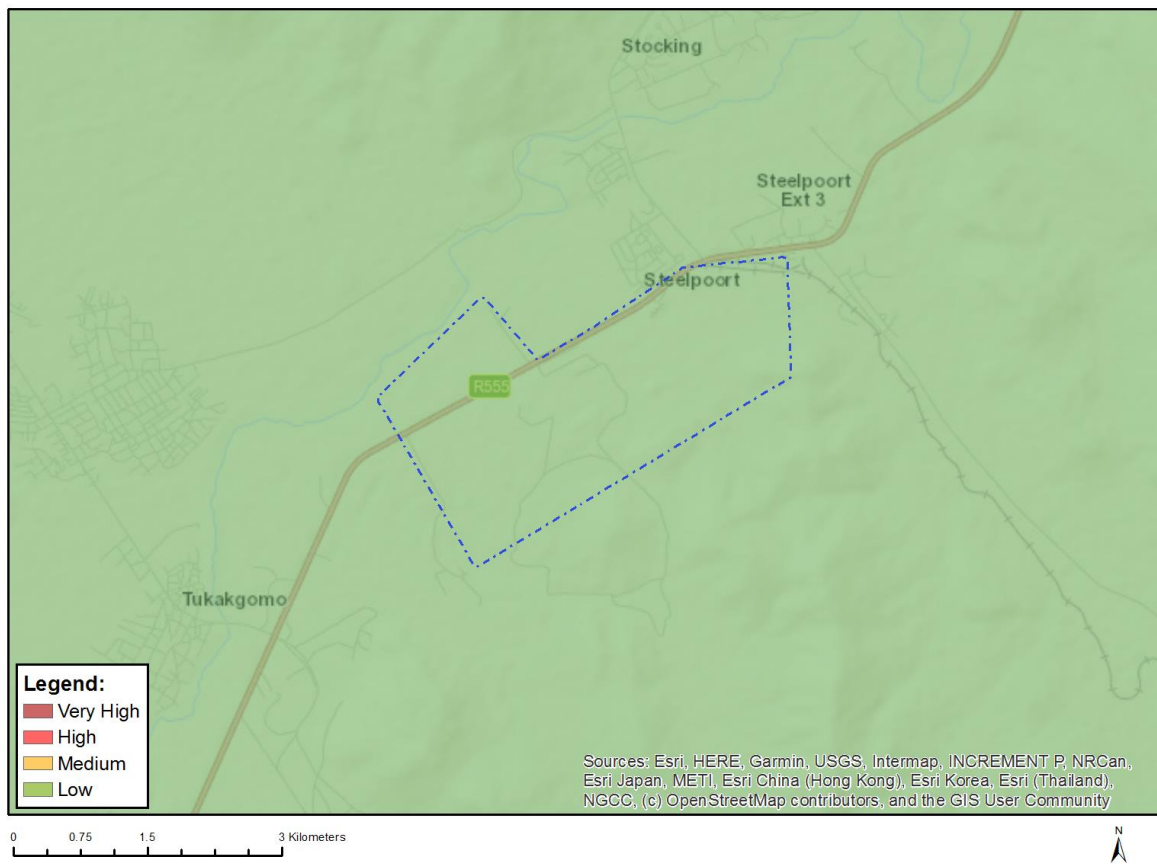


Very High sensitivity	High sensitivity	Medium sensitivity	Low sensitivity
X			

## Sensitivity Features:

Sensitivity	Feature(s)
High	Within 150m of a Grade IIIa Heritage site
Low	Low sensitivity
Very High	Within 100m of an Ungraded Heritage site

## MAP OF RELATIVE AVIAN THEME SENSITIVITY

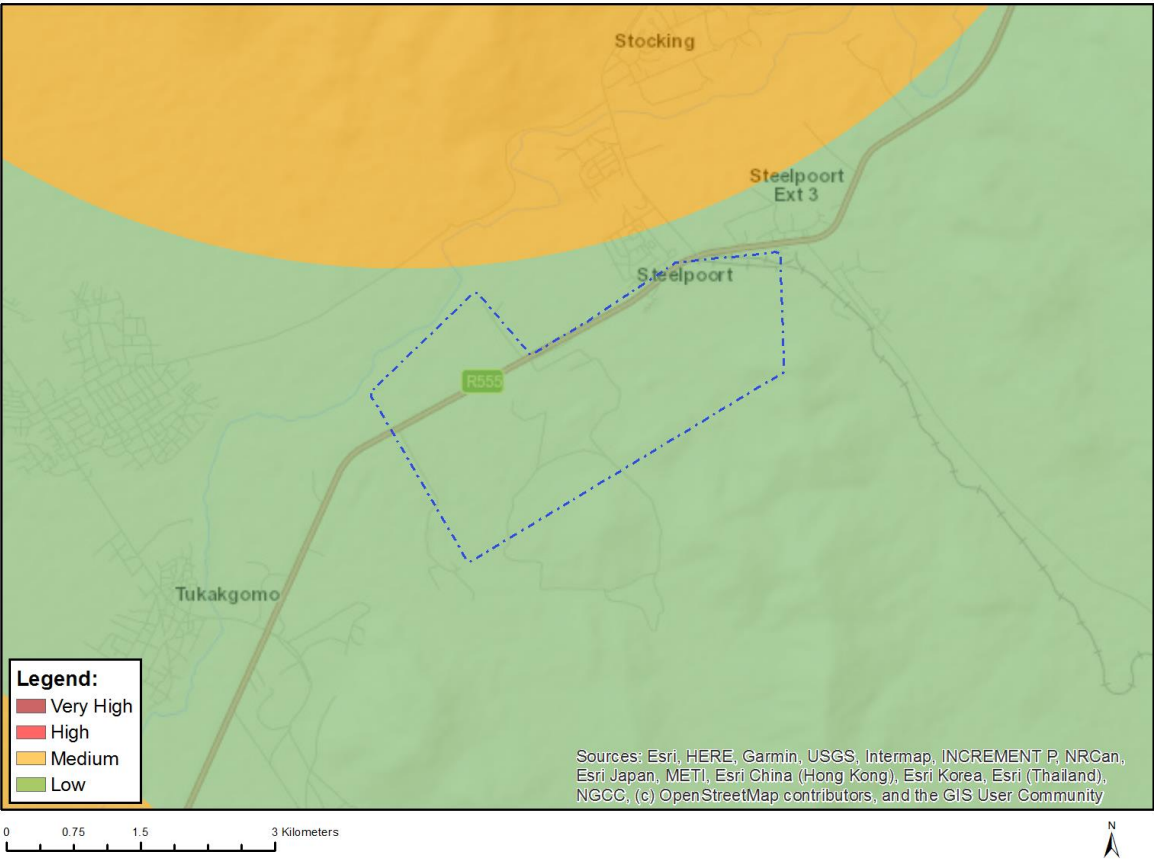


Very High sensitivity	High sensitivity	Medium sensitivity	Low sensitivity
			X

### Sensitivity Features:

Sensitivity	Feature(s)
Low	Low Sensitivity

# MAP OF RELATIVE CIVIL AVIATION (SOLAR PV) THEME SENSITIVITY



Very High sensitivity	High sensitivity	Medium sensitivity	Low sensitivity
			X

**Sensitivity Features:**

Sensitivity	Feature(s)
Low	No major or other types of civil aviation aerodromes

# MAP OF RELATIVE DEFENCE THEME SENSITIVITY

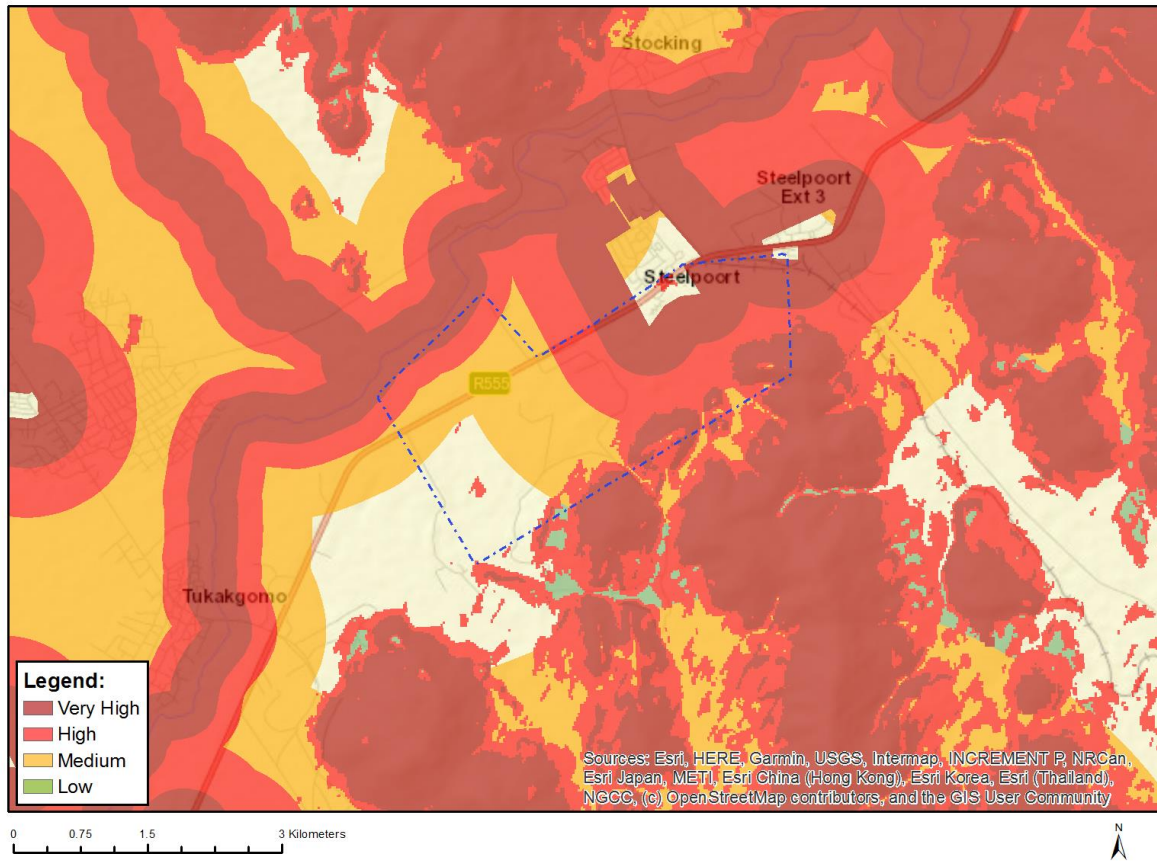


Very High sensitivity	High sensitivity	Medium sensitivity	Low sensitivity
			X

## Sensitivity Features:

Sensitivity	Feature(s)
Low	Low sensitivity

## MAP OF RELATIVE LANDSCAPE (SOLAR) THEME SENSITIVITY

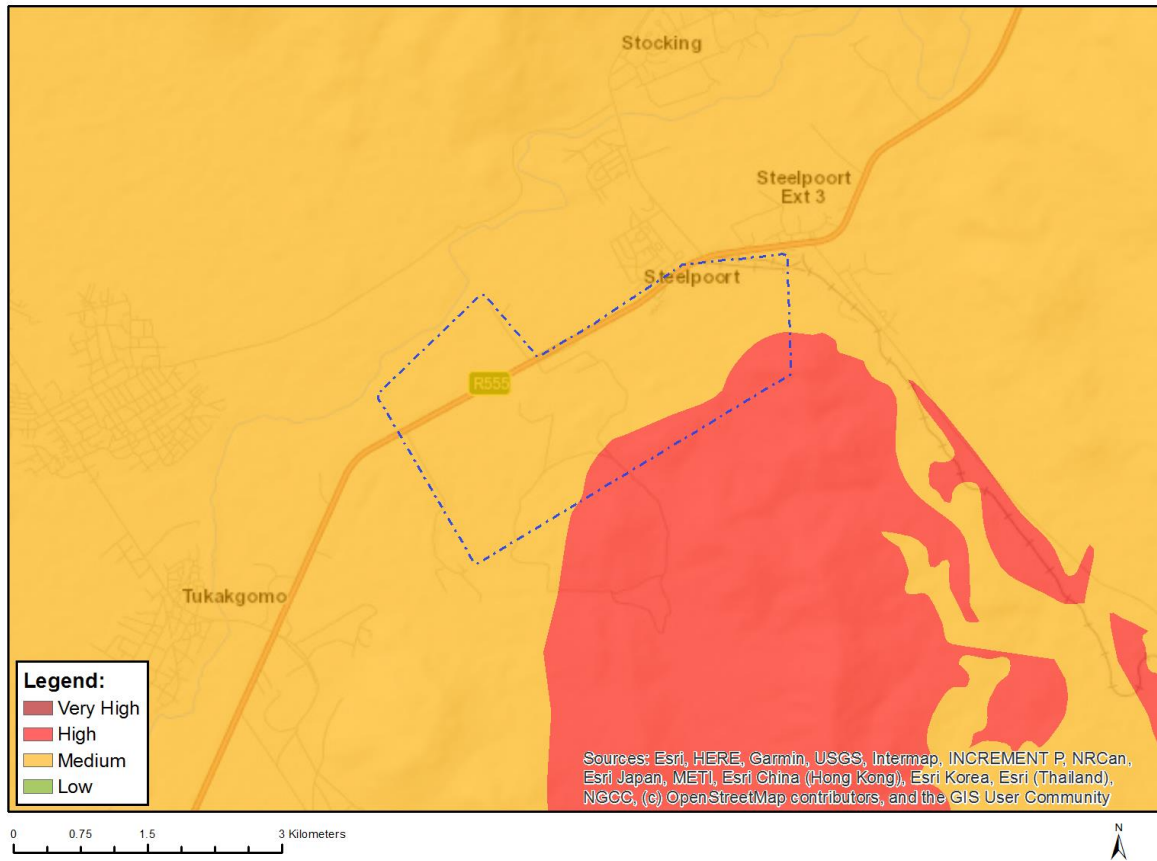


Very High sensitivity	High sensitivity	Medium sensitivity	Low sensitivity
X			

### Sensitivity Features:

Sensitivity	Feature(s)
High	Between 500 and 1000 m of a town or village
High	Slope between 1:4 and 1:10
High	Within 500 m of a river
Low	Slope less than 1:10
Medium	Between a and 2 km of a town or village
Medium	Within 1000 m of a wetland
Very High	Within 500 m of a town or village
Very High	Mountain tops and high ridges
Very High	Slope more than 1:4
Very High	Within 250 m of a river

## MAP OF RELATIVE PALEONTOLOGY THEME SENSITIVITY



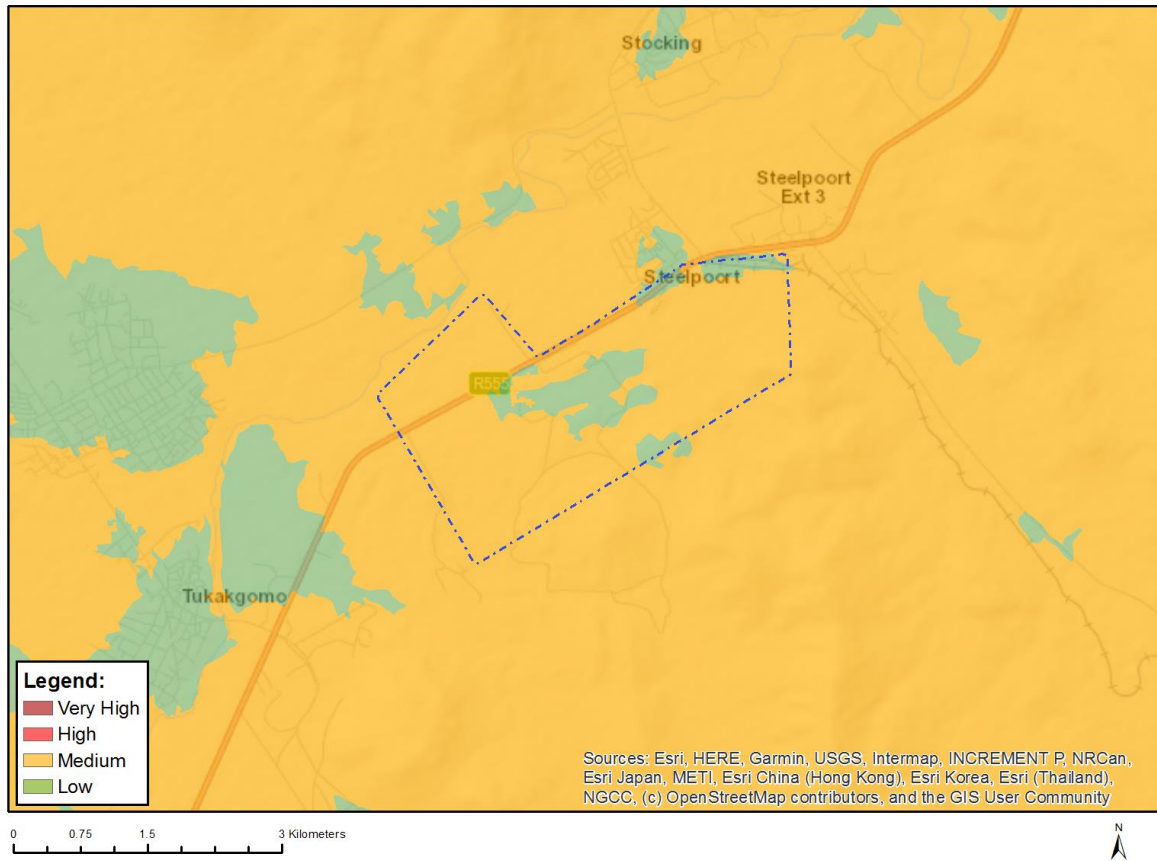
Very High sensitivity	High sensitivity	Medium sensitivity	Low sensitivity
	X		

### Sensitivity Features:

Sensitivity	Feature(s)
High	Features with a High paleontological sensitivity
Low	Features with a Low paleontological sensitivity
Medium	Features with a Medium paleontological sensitivity



## MAP OF RELATIVE PLANT SPECIES THEME SENSITIVITY



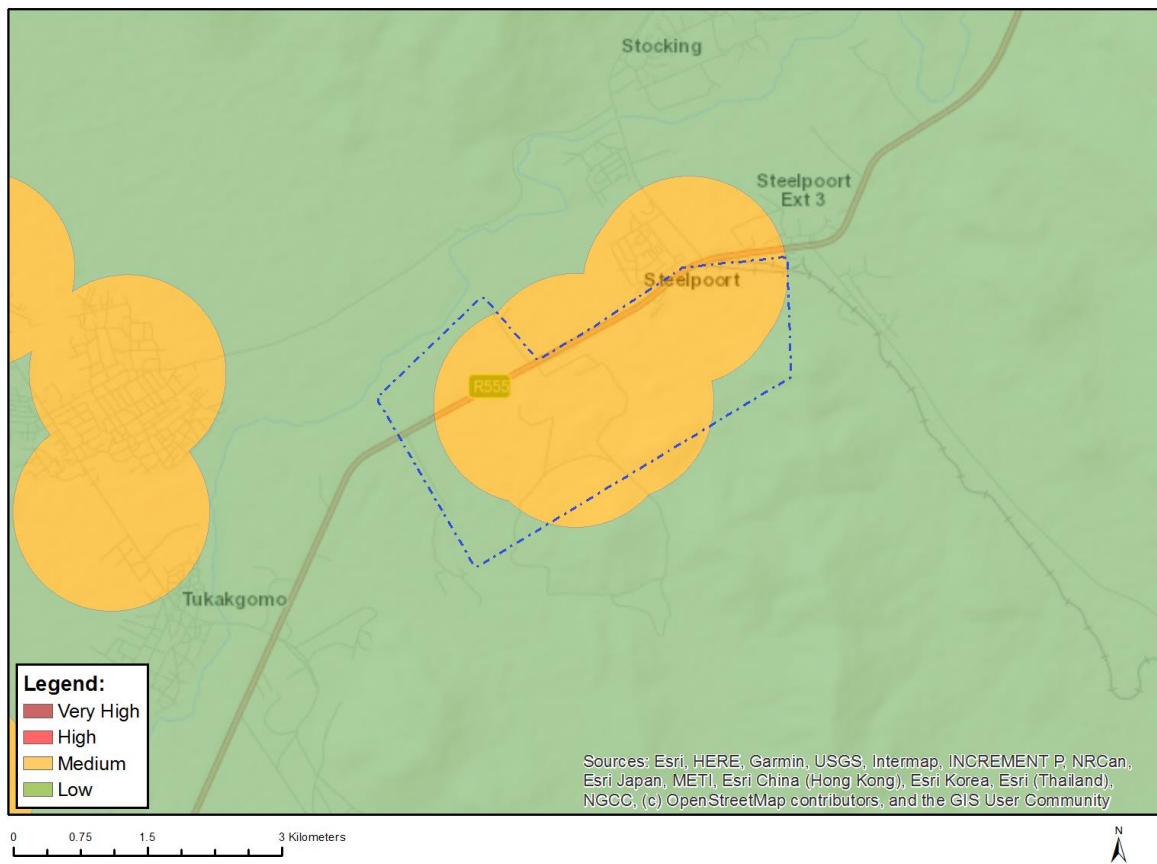
Where only a sensitive plant unique number or sensitive animal unique number is provided in the screening report and an assessment is required, the environmental assessment practitioner (EAP) or specialist is required to email SANBI at [eiadatarequests@sanbi.org.za](mailto:eiadatarequests@sanbi.org.za) listing all sensitive species with their unique identifiers for which information is required. The name has been withheld as the species may be prone to illegal harvesting and must be protected. SANBI will release the actual species name after the details of the EAP or specialist have been documented.

Very High sensitivity	High sensitivity	Medium sensitivity	Low sensitivity
		X	

### Sensitivity Features:

Sensitivity	Feature(s)
Low	Low Sensitivity
Medium	Sensitive species 1252
Medium	Sensitive species 1033
Medium	Sensitive species 587
Medium	Asparagus fourei
Medium	Polygala sekhukhuniensis
Medium	Searsia batophylla
Medium	Searsia sekhukhuniensis
Medium	Combretum petrophilum

## MAP OF RELATIVE RFI THEME SENSITIVITY



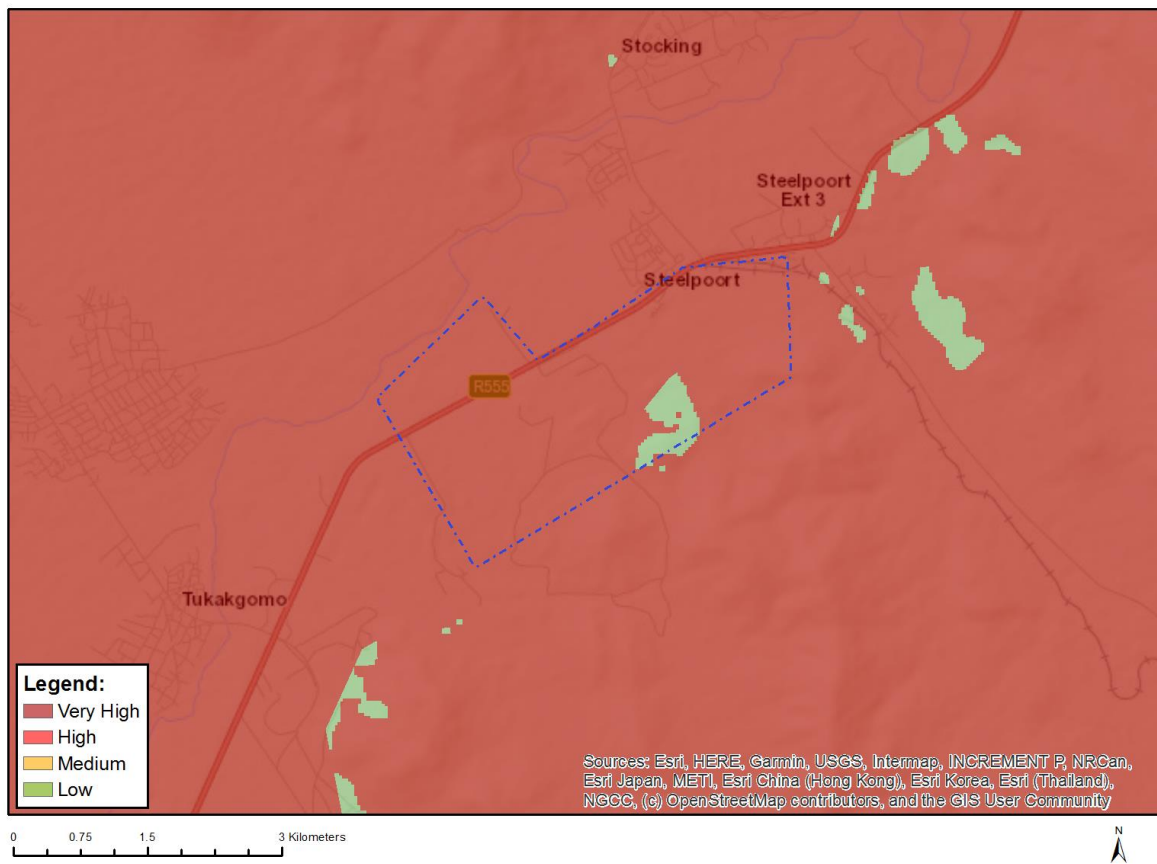
Very High sensitivity	High sensitivity	Medium sensitivity	Low sensitivity
		X	

### Sensitivity Features:

Sensitivity	Feature(s)
Low	Low sensitivity
Medium	Within 1 km of a telecommunication facility



## MAP OF RELATIVE TERRESTRIAL BIODIVERSITY THEME SENSITIVITY



Very High sensitivity	High sensitivity	Medium sensitivity	Low sensitivity
X			

### Sensitivity Features:

Sensitivity	Feature(s)
Low	Low Sensitivity
Very High	ESA 1
Very High	EN_Sekhukhune Plains Bushveld